



How to Export STL Files from CEREC Chairside Software

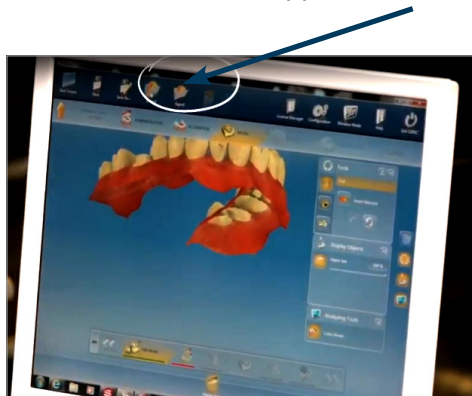
CEREC/ORTHO/SIRONA CONNECT:

With the release of **CEREC Ortho 1.2** software, **Dentsply Sirona** has also introduced an Open Scan Export License which enables users to export STL files from the chairside software.

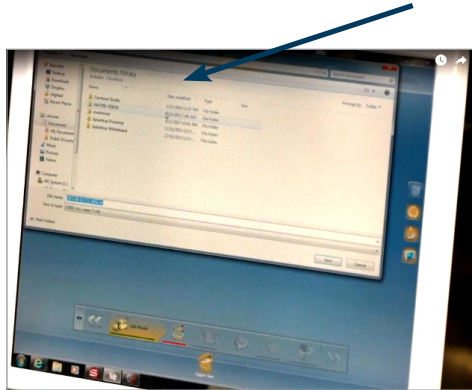
SOFTWARE NEEDED:

CEREC Ortho 1.2 and higher, CEREC 4.5 and higher, or Sirona Connect 4.5. The applicable license must be activated on the License Drive which is plugged into the unit for the feature to work.

- 1. Set up a case in CEREC Software.** Capture the images, and advance to the point where the buccal bite is articulated in the Model Phase.
- 2. Click the arrow in the upper left corner of the screen. | Select Export.**



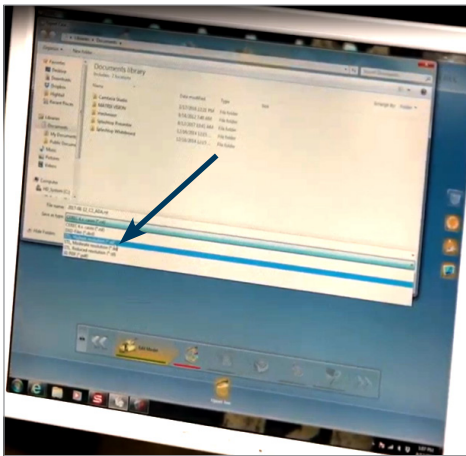
- 3. Highlight the location** where you want to save the file on the left hand side of the windows screen.





How to Export STL Files from CEREC Chairside Software (Continued)

4. Use the drop down menu in the 'Save as Type' field and **select .STL from the list**. The user can rename the file by typing whatever they choose in the File Name field. This is optional.



5. **Click Save.** The file is now saved in the location as directed by the user and can be copied to a flash drive or uploaded to a file sharing service as needed.

ITEMS TO NOTE:

- The Open Scan Export License is free for CEREC Club members **upon request**.
- Users must **install CEREC/Sirona Connect 4.5 or Ortho 1.2** prior to requesting the license.
- To request the Open Scan Export License, CEREC Club customers (or their branch representative) can call the distributor that sold the CEREC Scanner.
- The license will be distributed through the sironaupdates.com portal.
- Non-club customers can contact their local distributor representative to inquire about pricing and order the license.
- The Open Scan Export file type is intended for use with model printing. Users may determine if the file type is suitable for use in other formats.